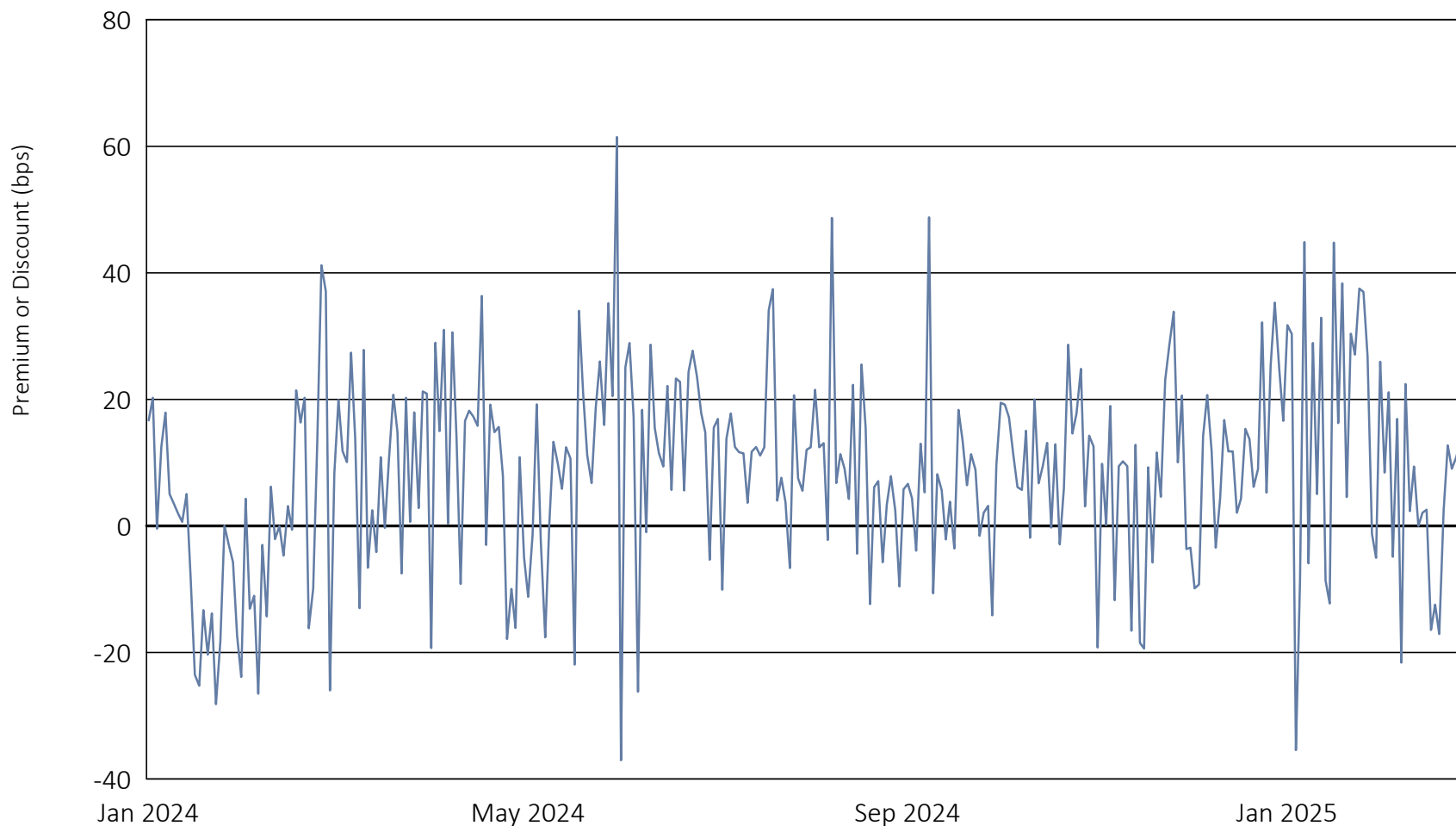


Aptus International Enhanced Yield ETF

January 02, 2024 to March 31, 2025



| | Calendar Year 2024 | Calendar Year 2025 through March 31, 2025 |
|--------------------------------|--------------------|---|
| Days traded at premium | 180 | 47 |
| Days traded at net asset value | 0 | 1 |
| Days traded at discount | 72 | 13 |

The following table and line graph are provided to show the frequency at which the closing price of the Fund was at a premium (above) or discount (below) to the Fund's daily net asset value ("NAV"). The table and line graph represent past performance and cannot be used to predict future results. Shareholders may pay more than NAV when buying Fund shares and receive less than NAV when those shares are sold because shares are bought and sold at current market prices.